

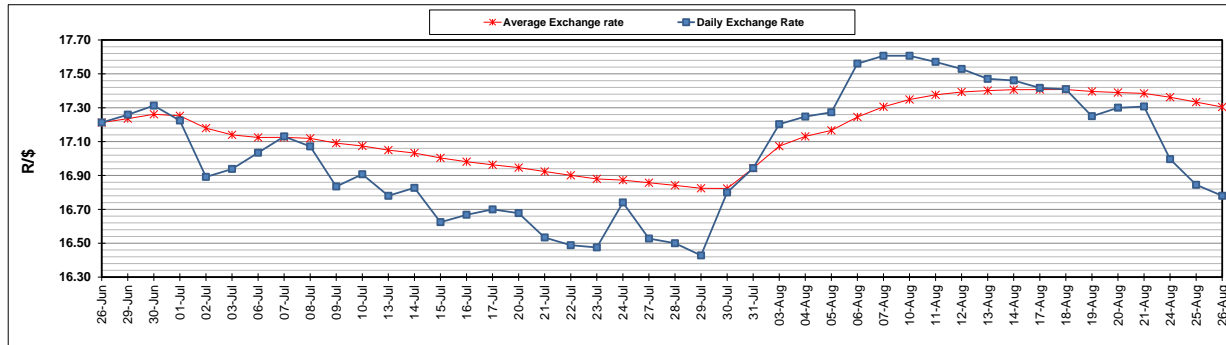
	PETROL 95 ULP	PETROL 93 ULP & LRP	DIESEL 0.05%	DIESEL 0.005%	ILL. PAR.
GAUTENG PUMP PRICE (SA c/l) AS FROM 05/08/2020	1,517.000	1,488.000	-	-	-
WHOLESALE PRICE (SA c/l) AS FROM 05/08/2020	-	-	1,348.560	1,352.960	742.828
SINGLE NATIONAL MAXIMUM RETAIL PRICE	-	-	-	-	934.000
BASIC FUEL PRICE - 26/08/2020 (SA c/l)	568.668	560.399	552.408	555.030	486.784
PRESS RELEASE CONTRIBUTION TO BFP 05/08/2020 - 26/08/2020 (SA c/l)	569.770	550.770	597.630	602.030	538.128
UNIT OVER/(UNDER) RECOVERY - 26/08/2020 (SA c/l)	1.102	(9.629)	45.222	47.000	51.344
AVERAGE BASIC FUEL PRICE 31/07/2020 - 26/08/2020	565.703	556.453	571.997	576.086	508.088
AVERAGE UNIT OVER/(UNDER) RECOVERY 31/07/2020 - 26/08/2020	3.278	(6.472)	18.528	18.838	23.882

ANALYSIS MOVEMENT OF AVERAGE OVER/(UNDER) RECOVERY

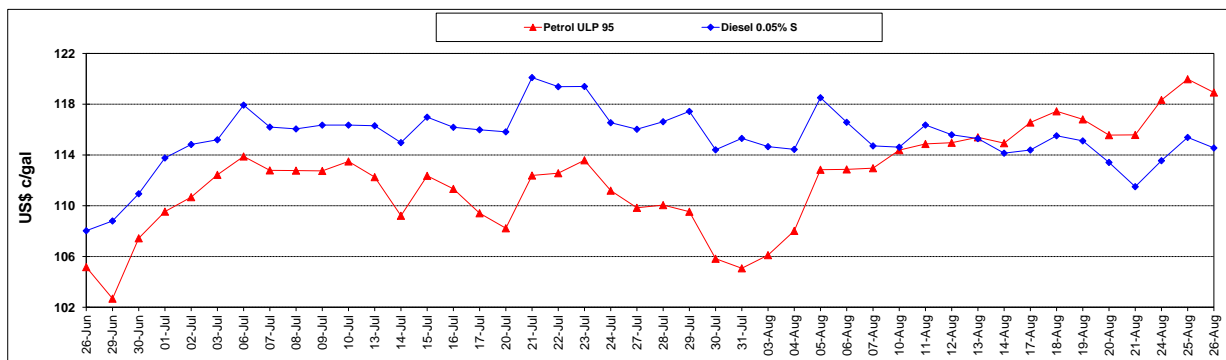
	PETROL 95	PETROL 93	DIESEL 0.05%	DIESEL 0.005%	ILL. PAR.
- MOVEMENT IN INTERNATIONAL PRODUCT PRICES	18.990	8.983	34.415	34.839	37.994
- MOVEMENT IN EXCHANGE RATE	(15.712)	(15.455)	(15.887)	(16.000)	(14.112)
AVERAGE UNIT OVER/(UNDER) RECOVERY 31/07/2020 - 26/08/2020	3.278	(6.472)	18.528	18.838	23.882

R/\$ EXCHANGE RATE - (R/\$16.7800 - 26/08/2020)

EXCHANGE RATE USED IN BASIC FUEL PRICE



INTERNATIONAL PRODUCT PRICES OF BASKET USED IN BASIC FUEL PRICE



BASIC FUEL PRICE IN SA CENTS PER LITRE

